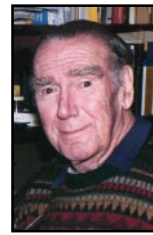


SOFTWARE LIBRARY



Phil Trudinger

Phil Trudinger Ph: 6248 8939
(11am-6pm)
Email: ptruding@pcug.org.au

NEW AND UPDATED WINDOWS PROGRAMS

(An asterisk denotes Windows 95
specificity or compatibility)

ALARMS AND REMINDERS

BILLCAL (372497)

BILCAL32* (565976)

Bill's Calendar 1.14i is an easy-to-use desktop calendar package which can keep text and audio notes, schedule daily tasks, duplicate repetitive events and auto-purge its files. The Calendar and Schedule can also be printed in high quality with any Laser or Inkjet printer. Reg Fee \$20

CAL3104B (578667)

Calendar+. 1.04.00 is a powerful ToDo list and appointment manager for Windows. Features include support for up to 65,000 items, a daily journal, automatic backup of databases, the ability to instantly stamp items

The files described in this article are on the December 1997 CD-ROM (PsL Vol 5, #12) which is currently on the Bulletin Board: all are ZIP files. Please quote the month or Vol/# when ordering files on disk.

The text files, CD1 to 7 inclusive, in Area 1 of the Bulletin Board, are the monthly CD-ROM file lists.

Reminder

Most CD-ROM programs are Shareware. A reasonable time (generally one month) is allowed for evaluation, but if you continue to use a program beyond this time you should comply with the author's conditions that usually require payment of a registration fee. Bear in mind that this is the only way by which an author receives any reward for his/her efforts. Unless otherwise stated registration fees are in US dollars.

with the current date and time, and much more. Reg Fee \$25

CNTDWN12 (124598)

Judy's Countdown 1.2 helps you keep track of upcoming important events, and 'counts down' the days until the big day arrives. You can have multiple events per day, and can choose the number of upcoming events to show on screen. It comes configured for many holidays, and allows you to add your own important events. Reg Fee \$10

ICALV10* (279078)

iCal 1.0 is a calendar/scheduler that can be used for scheduling meetings, events, vacations, menus, or just about anything else. Your calendar and all of the entry screens are available on the Web. There is also a built-in security system so that you can limit who changes your calendar. Requires Win95/NT. Reg Fee \$35-\$95

IT21E16 (384552)

IT21E32* (389944)

ItsTime! IT21E32 (389944) 2.1e is an easy to use alarm list manager. Features include support for an unlimited number of alarms, repeating alarms, the ability to set alarms to ring on selected days of the week as well as at

specific times, WAV sound support, and more. Reg Fee \$20

COMMUNICATIONS

CFXTRIAL (2240510)

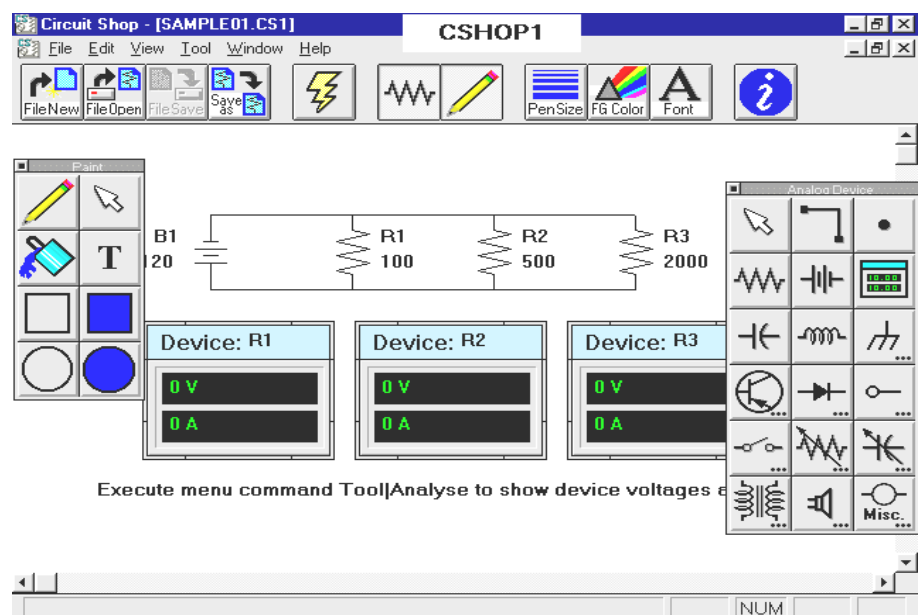
ChromaFax Trial 1.00 allows you to send files or documents on your PC using direct and indirect means. Direct support refers to the sending of image files (TIFF, BMP, JPG) as attachments. The image is automatically converted to a fax during transmission. Indirect support means you can attach documents, including support for many software suites such as Microsoft Word 95 and Word 97. Reg Fee \$50

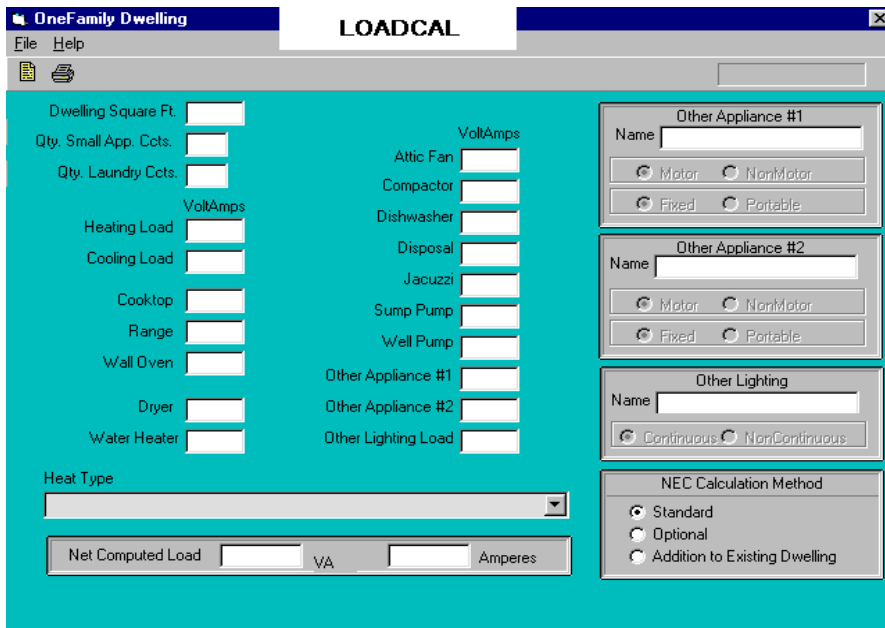
CV32* (1978346)

CacheViewer (32-bit) allows the user to select some or all of the text files and images in a folder and then cycle through each file displaying it while allowing easy filing in new folders. This is particularly suited to web browsing, as you can browse through your cache off-line, making decisions as to where to file all the pictures that you have downloaded. Reg Fee \$25

FD_10SW (414519)

Castalia File Driver 1.0 provides a simple way to automatically push files to an FTP server.





The application will check at predefined intervals to determine if any of the selected files have changed. It will also replace a string with the local machine's IP address. Finally, if the software senses that the machine has been disconnected from the network it can run any software to reconnect the PC. Reg Fee \$?

JTF22E16 (1050145)

JTF22E32* (1092051)

Just The Fax (16-bit) 2.2e easy to use personal fax program with a WYSIWYG fax and cover sheet editor. Features include the ability to create unlimited cover sheet templates, the ability to spell check fax documents and cover sheets, an unlimited phone number database, and more. Reg Fee \$20

NMT16_12 (245631)

NMT32_21* (430644)

Nexus Mainframe Terminal 1.2 is a Windows Telnet 3270 terminal emulator. The Telnet protocol is used as terminal interface to the host system and all communication is based on Winsock. This release does not support file transfers. Reg Fee \$80

VOFFPE (2487446)

Visual Office 4.00 allows you to store and track graphic files, Web pages, and multimedia files in Windows. You can clip together Web pages and files related by topic (regardless of their location), and add 'Post-It' notes or a 'to do' list to each file. It also provides 300 popular Internet site addresses. Reg Fee \$50

WINTEL32* (608261)

WinTel32 2.3.2 is a powerful communications program for Win95/NT. It features file transfer using ASCII, XModem, YModem, ZModem, and Kermit; VT100, ANSI Colour, VT52, and TTY terminal emulation; viewing GIF and JPEG images offline or while downloading; Telnet client for TCP/IP connection; uuencoding and decoding Internet files; and more. This version limits connect time to 15 minutes. Reg Fee \$45

ENGINEERING

CSHOP1 (632237)

Circuit Shop 1.0 allows you to create and learn electronic circuits and concepts. Features include drawing support to construct simple circuits consisting of basic analog devices such as resistors, batteries, transistors, diodes, and transformers, a tutorial which teaches basic electronic concepts, and a simple paint toolbox to allow text, lines, ovals and rectangles to be added as circuit annotations. Reg Fee \$29

DYNAMO (645729)

Dynamo 1.01 is an analog simulator designed to aid in the analysis of complex dynamic systems (mechanical, electrical, etc). It allows a designer to easily model real world components and interactions, studying the resulting responses with a computer rather than having to physically model the system. Reg Fee \$65

ETSETUP (978628)

Engineer's Toolbar 1.0.1 provides easy access to commonly-needed utilities for engineering and science students and professionals. It allows you to convert a number from one set of units to another, calculate the inertia of a common shape, determine the density of a material in a particular unit, or look up a common trigonometric or calculus function. Reg Fee \$28

GRMAT16W (407644)

Graphmatica for Windows 1.60 is an interactive algebraic equation grapher used to plot mathematical curves. It supports several styles of graphing, including regular Cartesian, polar, parametric, slope-field, and initial-value approximations. Other advanced features include remembering the last 25 equations graphed, several ways to scale or size the grid, and the ability to save lists of equations and the current settings for later use. On-line help and demonstration files are also included. Reg Fee \$25

LOADCAL* (1986063)

LoadCalc 97 1.00 is an electrical design tool for Win95/NT. Features include the ability to calculate service and feeder sizes for dwelling units, standard/optional and additions to existing units, the ability to perform demand factoring, and more. Reg Fee \$95

VIN16_77 (247037)

VIN32_77* (227092)

Vinny Graphics 1.77 is a graphing and data analysis program for engineers and engineering students. It is easy to use and accepts and exports data through a variety of sources. Reg Fee \$10 Reg Fee \$15

GAMES

BEETLE21 (1168373)

Beetle Run 2.1a is an interesting arcade strategy game for Windows. You must rearrange a path for your ladybug to travel around the game board, trying to reach the target score to proceed to the next level. There are digitised sound effects, amusing animations, and educational beetle facts. This version has seven increasingly challenging levels. Reg Fee \$18

CHESTR12* (2994724)

Chess Tree 1.2.0 is a chess study package for Win95/NT. You can select any node along a play tree, and instantly see the board position as well as study standard openings, great chess matches, and more. Reg Fee \$35

DIAGLE11 (994522)

Diaggle for Windows 1.1a is an unusual falling-block game where you must arrange triangles to form a pyramid at the bottom of the game board. When you can fill this pyramid with a diagonal made up of triangles of the same colour, then those triangles and the others above it will be removed. Reg Fee \$18

FROGHP11 (1361305)

Frog Hop for Windows 1.1a challenges you to keep your frog jumping for as long as possible. Rotate the lily pads with your mouse to direct the frog across the pond. Gain extra points for bonus pads, stray insects that fly onto the board and much more as you try to reach the Top Ten High Scores. Reg Fee \$18

OILPRO20 (1053926)

Oilcap Pro for Windows 2.0a is a fast-paced game where you must race the clock as you place pipe links for the oil to flow. Quick thinking and fast reflexes are required to stay ahead of the onrushing oil. You can gain extra points for oilrigs, oil holes and more. Reg Fee \$18

PIRATE13 (558722)

Pirate's Plunder 1.30 is a fun-filled high-seas strategy game that features digitised sound effects and original MIDI music. You are Captain Nevarro, and your quest is to search the rich waters of the Andorian Sea for lost treasures. Battle dangerous sea creatures and fierce pirates, and use special items such as

sextants and spyglasses to gain an edge over the dreaded dangers of the deep. Reg Fee \$10

RAIDER13 (752106)

Fortune Raiders 1.30 as Arizona Smith, you must outwit your opponent while searching for buried treasure in this unique puzzle/strategy game. Enter caves and uncover valuables by moving aside the obstacles that conceal ancient treasures. Avoid acid traps and gremlins while using special items to aid you in your quest. Beware the hidden bombs in each room, for they have been known to cause cave-ins. Reg Fee \$10

SHOP11 (1312315)

Shop Drop 1.1 is a unique variation on the classic falling block game where you must maneuver falling packages into your shopping basket before they land on the floor. Relaxing background music plays continuously while you shop with unlimited credit. Requires a 486+, SVGA, and a mouse or joystick. A sound card is optional, but recommended. Reg Fee \$20

SQUARK12 (983050)

Squark for Windows 1.2a is an exciting action arcade marble game where the objective is to guide your marble through a maze capturing squares by traveling all four sides. Watch out for the dreaded green marbles that will try to stop you from completing each action filled level. This is a challenging game packed with features and is suitable for all age levels. Reg Fee \$18

GRAPHICS

KHART107 (643043)

KHART Chart Maker 1.07 helps produce a variety of charts, graphs and data plots in Windows. It can easily create 2D, 3D, line, area, bar, column and pie graphs, complete with chart rotation and pie slicing. It reads and stores data as DOS tabbed or spaced text documents. Reg Fee \$25

ORNSW (746328)

Ornamatica Intro 1.0 allows you to create ornamental borders, corner-pieces and cross-heads for a variety of desktop publishing and graphics projects. You simply drag a graphic onto the border and the program will automatically fill the sides, the corners or the whole border as required. Individual elements can be resized and rotated individually or in groups. Several samples and templates are provided to help get you started. Reg Fee \$0-\$30

VBC21C16 (1331043)

VBC21C32* (1315267)

Visual Business Cards 2.1c is a business card design and printing program with a WYSIWYG interface. Features include support for any Windows font, a variety of special effects, BMP/WMF graphic support, and much more. Reg Fee \$20

VL21C16 (571837)

VL21C32* (554386)

Visual Labels for Windows 2.1c is an easy-to-use label design and printing package which allows you to create an unlimited variety of labels using text, pictures, boxes, ovals, lines, counters, and patterns in any font, colour, or rotation. This includes a comprehensive database of Avery label and business card templates. Reg Fee \$43

W95SYS02* (239909)

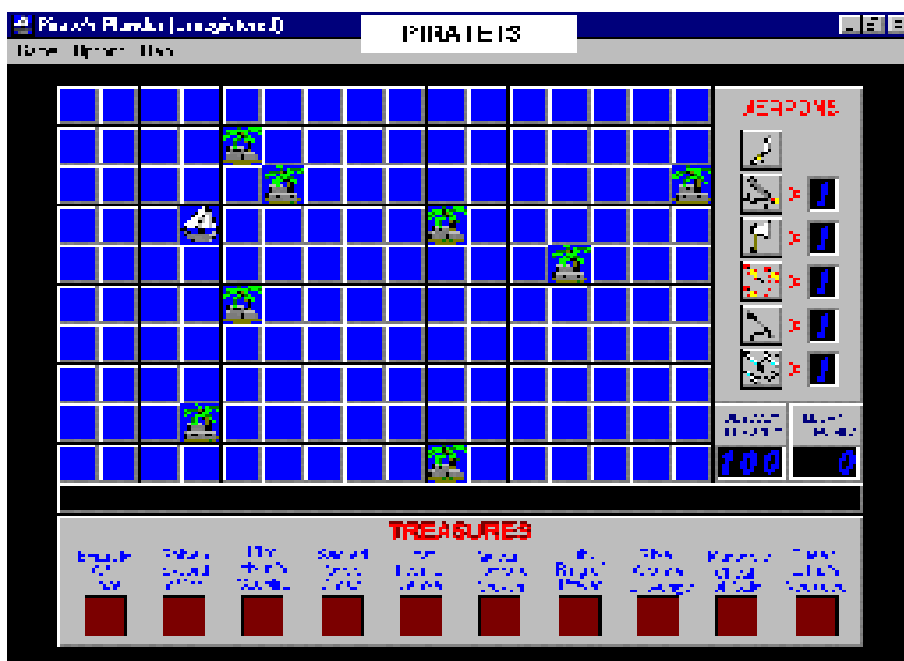
WinSys95 1.20 is an automatic random BMP changer for Win95/NT. Reg Fee \$12 AUS

XMASCRD2 (727259)

XMASCRD3 (882757)

XMASCRD4 (886474)

FunE-Cards (Christmas Sets 2-4) 3.1 allows you to design and create colourful electronic greeting cards for you to send to your friends and family by e-mail. You can completely customise the text, as well as add audio or video to the card. Reg Fee \$10





MISCELLANEOUS

32PSA021 (2486121)

PrimaSoft Hardware Organizer 2.10 is a powerful and flexible program that will help you organise your hardware. Features include support for an unlimited number of records, a graphical data field for scanned-in images, flexible sorting, powerful reports, label printing, customisable display, and more. Requires Win95/NT. Reg Fee \$30

32PSSW21* (2432104) is a similar program for software organising.

AROSW301 (974465)

A_Roster 3.01 helps organise employee rosters on a day-by-day basis for a given week. There can be an unlimited number of sites and the roster of any particular day can contain an unlimited number of employees. Sites can be named to designate them as sites, departments, shifts or anything else you require. Reg Fee \$99

CON3103B (558353)

CON9106B* (1191961)

1st Contact 1.03.00 is a full featured contact manager for Win31. Features include the ability to hold information on over 65,000 contacts, an Explorer-type interface with a fully customisable button bar, support for international phone dialing, the ability to divide your contact list into white and yellow

pages, ten user defined categories, and more. Reg Fee \$25

FAMFIL11 (493343)

The Family Files 1.1 helps you keep track of family information, including birthstones, burial plots, blood types, clothing sizes, insurance, credit cards, cars, magazine subscriptions, and much more. A contact page quickly finds phone and address for work, school, second job, hangouts, etc. A unique Document Finder feature remembers where important papers are kept. Reg Fee \$25

GENIUS15 (831021)

Genius for Windows 1.5 is genealogy package for WIN31. Features include support for up to 5000 persons, a 400-word note file for comments, the ability to print formatted data sheets for each individual, and more. Requires SVGA and VBRUN300. This version stops working after 90 days. Reg Fee 55 AUD

LNPL2132* (1015543)

Loan*Calculator! Plus (32-bit) 2.1b is a suite of seven financial calculators for Win95/NT. This includes loan, interest due/calendar math, remaining balance, accelerated payment, balloon payment, refinance and amortisation calculators. You can run multiple copies of a calculator for fast side-by-side comparisons. Reg Fee \$25

LOAN320 (213722)

Home Loan Diary 3.20 is a home mortgage diary and amortisation schedule calculator. Reg Fee \$20

PLNWCH21 (536961)

PlanetWatch 2.1d is an easy-to-use atlas and simulation of our Solar System for Windows. It uses a simple multiple-window interface that provides a digitised photo viewer, a planetary atlas, and animated heliocentric maps. The program can also display and print astronomical position data for the planets for any specific date and time. Reg Fee \$20

SCOR32V3* (265599)

Scorea (32-bit) 3.0 is a music score sheet printing program. It can print music score paper in either full score or short score format on A4 size paper. Requires Win95/NT. Reg Fee \$20

SKYVW30 (729185)

SkyView 3.0 performs many of the functions of a planetarium by showing everything that you could see with the naked eye from any location on the earth, in the past, the present, or in the future. This can display the Sun, Moon, the planets, all stars that are brighter than or equal in brightness to a limiting magnitude you select, constellations, and more. Reg Fee \$0

ZSKEL30 (344837)

ZuperSkeleton 3.0 challenges you to correctly identify the bones of the human skeleton. You simply click on a bone, and a list of possible names is produced for you to select from. Reg Fee \$10

SCREEN SAVERS

BALLSAVE* (161867)

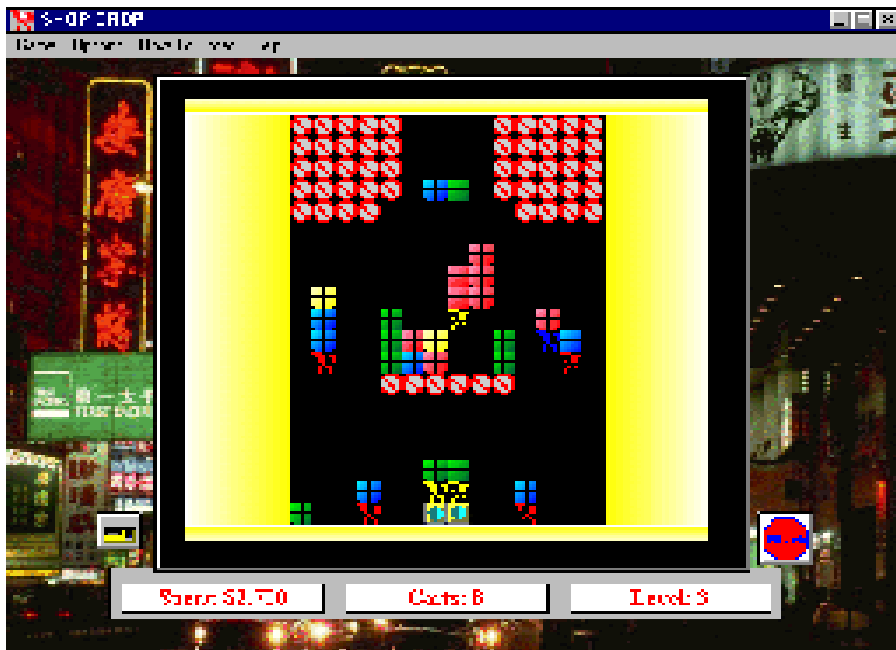
BalloonSaver 1.2 is a WIN31/Win95 screen saver with animated hot-air balloons that float across the screen, blown by the clouds and wind. A password protection option is available. Reg Fee \$19-\$29

BIRDSAVE* (129405)

BirdSaver 1.2 is a WIN31/Win95 screen saver with animated swans, parrots, pelicans, cardinals, pheasants and more. A password protection option is available. Reg Fee \$19-\$29

CLOCKSAVE (178988)

ClockSaver 1.2 is a screen saver that displays a bouncing digital clock and tumbling 3D computer-generated objects on your Windows desktop. Reg Fee \$29-\$39



CLOUD24A (203684)

Fractal Clouds 2.4 is a screen saver that generates beautiful random 'clouds' on the screen in an endless variety of forms and colours. Both 16- and 32-bit versions are provided. Reg Fee \$8

EZSAVER (146425)

EZSaver 2.2 allows you to create a personalised Windows screen saver using your own BMP images. Graphics can be made to spin, twirl, and skate across the background colour of your choice. A bonus screen saver is included. Reg Fee \$22

FISHSAVE* (133982)

FishSaver 1.2 is a WIN31/Win95 screen saver that features animated swimming tropical fish. Reg Fee \$29-\$39

MYMMSS51 (4323260)

My MultiMedia Screen Saver - 32 5.1 allows you to create a slideshow screen saver with your own pictures and audio files. Reg Fee \$25

SPACESAV* (209964)

SpaceSaver 1.2 is a WIN31/Win95 screen saver with photo-realistic astronauts, a space-shuttle, galaxies, the moon, and more. A password protection option is available. Reg Fee \$29-\$39

SPSW10 (396573)

Spray Paint Screen Saver 1.00 is a unique screen saver that allows you to type in some phrases and watch as your words are spray-

painted onto the screen in the style of a graffiti artist. Reg Fee \$9

SSSW95NT* (120272)

ScrnSaveSwitch/Plus (32-bit) 4.50 gives you fast and complete control over your Win95/NT screen saver. A click to a small button on your desktop lets you enable, disable, start, or configure your screen saver. You may set the screen saver delay in one second (rather than 1 min.) increments. It also provides quick and safe methods to log off, shut down or reboot your computer. Reg Fee \$10

TEALEAFS* (2365499)

Tealeafs (32-bit) 4.3-95 is a screen saver for Win95/NT that provides over 20 animated abstract art scenes. Each scene has an individual speed control, as well as several other user-defined options. Reg Fee \$27

WTRFAL13* (942123)

Waterfall Saver 1.3 is a screen saver for WIN31/Win95 that displays an animated waterfall. Reg Fee \$19-\$29

SECURITY

CRYPTOR (112504)

Cryptor 1.1 is an extremely easy-to-use encryption package for Windows. You simply select a file, type in a destination file name, choose a password, and click on the encrypt or decrypt button. Long filenames are not supported. Reg Fee \$10

PASS2RUN (5256)

Pass2Run allows you to easily add password protection to an EXE or COM file. Reg Fee \$5

PASSW121 (313695)

Password Guardian 1.21 is a handy database that stores all of your passwords into a single, convenient file. Your information is encrypted to prevent unauthorised access, and you just have to remember a single password to access them all. Reg Fee \$10

RESCUE63* (558076)

WinRescue 95 6.03 safeguards and restores Win95 so you'll never have to reinstall again. It restores the Registry and other configuration files in less than two minutes. A DOS program restores the Registry even when Win95 won't start. Reg Fee \$20+

SEC16 (406531)

Secure Disk helps to protect your computer's directories and files from unwanted eyes. It provides a 'fake' desktop while you are away, and can hide, delete or rename files or directories when an unauthorised person tries to access your files. Reg Fee \$15

SENTR211* (377918)

Sentry 95 2.11 will prevent all unauthorised users from accessing the Win95 desktop whenever your computer boots. Reg Fee \$14

UTILITIES

DBS1195* (763507)

DBSearch 1.1 allows you to search for a particular string, sub-string, prefix or suffix inside a database. You can search table names, column names, and row values. Requires Win95. Reg Fee \$10

GTIDESK* (1271914)

GTI Desktop+ (32-bit) 2.0 is a set of utilities to enhance your Win95/NT desktop. Features include a screen saver randomiser, random wallpaper changer, themes randomiser and a random startup/exit sound changer. It can also turn any screen saver into an animated wallpaper, and it lets you use JPEG images as wallpapers. Reg Fee 25 Pnds

MACROM (512234)

Macro Mania 4.0 is an easy-to-use macro program that works with any Windows program. It enables you to run programs (or switch to currently running programs) and then send keystrokes to that program with one simple command, just as if you had

manually started the program and typed in the keys yourself. It can also be told to switch back and forth between programs to transport data via the Windows' clipboard using cut, copy, and paste functions. Reg Fee \$18

PAPERW20* (91005)

Sticky Paper 2.0 simulates sticky memo-notes on your Win95 desktop. You just write down what you want to remember on the program's 'paper'. The paper can be set on top at all times, and a double-click will create a new note. Options include paper size, paper colour, text colour, font, etc. Reg Fee \$18

PLIIV201* (1033205)

PowerLauncherII 2.01 is the ultimate (?) shell extension for Win95 that provides an easy mechanism of finding and launching programs, easy access to the CD Player, Recent Documents, and the Phone Book and Dialer, useful Performance Meters that tell you how your system is operating, and more. Reg Fee \$15

SHUTMN13* (2039708)

Shutdown Monitor 1.31 runs programs and/or stored commands when Win95/NT shuts down. It can query you when Windows shuts down and you can select which to run, what order you want to run them, or cancel the shutdown. It can also execute different sets for different user profiles. Reg Fee \$20-\$22

TWEAK100* (184720)

TweakEzy 1.00 helps correct the system time in Win95. This does not require Internet access, and is ideal for correcting time drifts greater than one minute per week. Clocks, date/time stamps, etc. will stay accurate to within seconds. Reg Fee \$10-\$15

WLCHECK (156823)

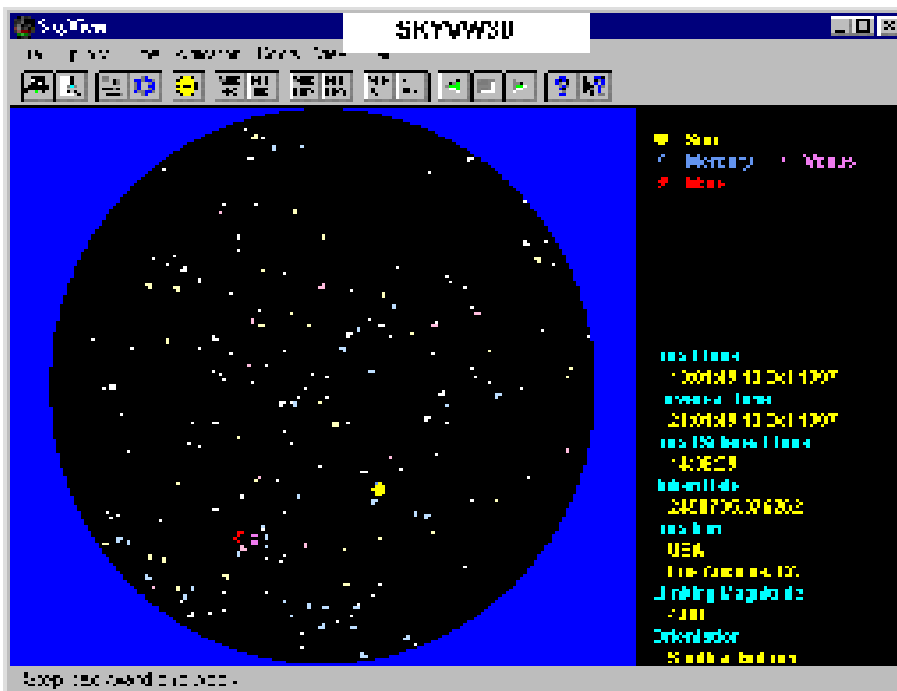
WLCHK95* (210148)

Link Check (32-bit) 5.7 verifies links between executable files and modules/DLLs in Win95. It allows you to view version information, check modules loaded in RAM, analyze function calls inside DLLs, and more. This is extremely useful for analyzing those 'Cannot find (filename) or one of its components' and 'Call to Undefined Dynalink' system error messages. Reg Fee \$39

WORDS

ACOMP10* (532799)

Accent Composer 1.0 simplifies the process of entering accented characters and other symbols into any Win95/NT program. Instead of typing codes on the numeric



keypad or pasting from the Character Map utility, it lets you create accented letters with easy-to-remember two character sequences. You can customise the hotkey as well as any of the sequences. Reg Fee \$30

NOT3111B (505887)

NOT9114B* (1207192)

NotePads+ (16-bit) 1.11.00 is a powerful notepad replacement for Windows. Features include support for large files, drag and drop editing, a handy list of the last eight files accessed, an automatic backup option, and more. Reg Fee \$25

PAGE23 (1201665)

Page After Page 2.3 is a full-featured word processing package for Windows. Features include a 120,000 word spell checker, colour support, mail merge, TrueType font support, page formatting, and much more. Reg Fee \$15

QE16 (264029)

QE32 (294535)

QuickEdit 1.11 is an enhanced replacement for Notepad, with unlimited file size capabilities, unlimited undo/redo, an auto-indent mode for programmers, and more. Reg Fee \$0

T97SETUP.ZIP (2570954)

Tolken97 3.2 is a combination language-translator, text editor, dictionary and vocabulary-test for Windows. It can translate Danish, French, German, Norwegian, Spanish, and Swedish to English. Translations will not

be grammatically correct, but will make the text much more understandable. Reg Fee \$15

NEW AND UPDATED DOS PROGRAMS

GAMES

AFIRE20S (626096)

AstroFire 2.0s is a fast moving arcade game in which you blast your way through 75 levels of asteroids and alien ships, collecting power-ups to boost your fire-power and your defences. The game features 256-colour raytraced graphics and more than 18 different types of enemy craft. Reg Fee \$30

HACXS10A (1388975) +

HACXS10B (1437335) +

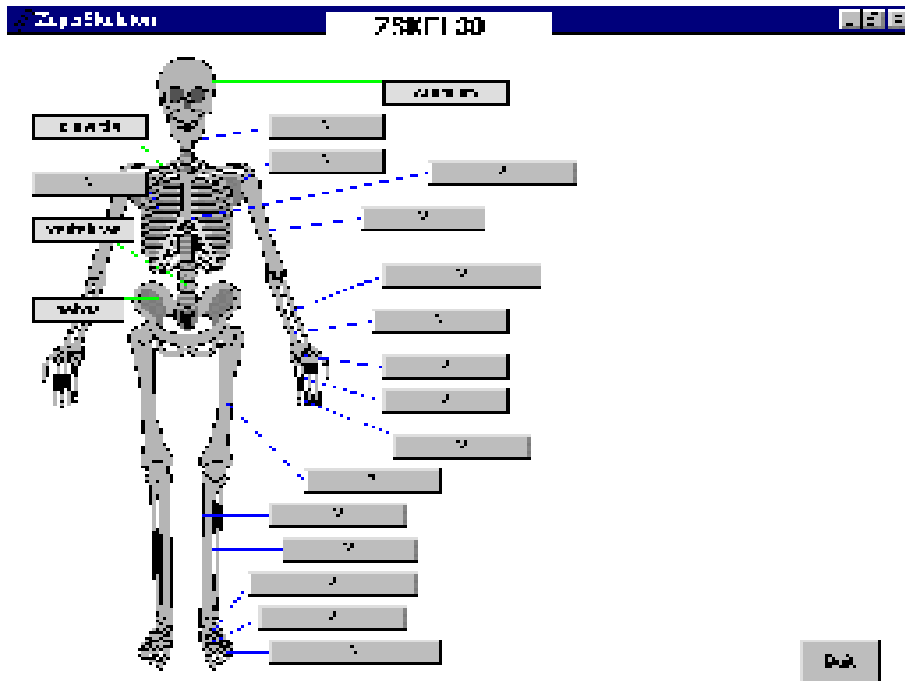
HACXS10C (1446885) +

HACXS10D (1025987)

HACX 1.0 is an add-on for DOOM II, a fast-paced, wrist throbbing, palm sweating, interactive first person shooting game. Reg Fee \$?

SERPENTH (2646096)

SerpentHead Deluxe 1.00 is a challenging adventure game where you try to locate the pieces of a magical sceptre to save your world from an evil sorcerer. The game display consists of a bank of buttons that you press



for movement and actions, a map, a graphic window that shows your surroundings, and an inventory screen. The graphics and music are nicely done. A Windows-based installation program is included. Reg Fee \$20-\$25

SPIDCAS1 (180930)

Spiders in the Castle! 1.00 a magic potion has exploded in the castle's laboratory, splashing some nearby spiders. Now the spiders are magically growing out of control! In this unique strategy game, the castle people must find the best weapons to fight off the magically growing spiders before the spiders devour everybody. Reg Fee \$15

Miscellaneous

GRMAT36D (193327)

Graphmatica 3.60 is an interactive algebraic equation grapher used to plot mathematical

curves. It supports several styles of graphing, including regular Cartesian, polar, parametric, slope-field, and initial-value approximations. Other advanced features include remembering the last 25 equations graphed, several ways to scale or size the grid, and the ability to save lists of equations and the current settings for later use. Reg Fee \$25

SAVER310 (240877)

The Paper Saver 3.10 prints up to eight pages of text on one sheet of paper on laser and H/P Inkjet printers. Features include page numbering, date, time and file name stamps, booklet printing, landscape and portrait printing, and more. Reg Fee \$17.50

SPEED15 (42538)

Speed (EJH) 1.50 is a resident keyboard enhancement utility the provides an extended

adjustable type-ahead buffer, auto capslock and numlock release, easy to use macros, and more. Reg Fee \$0

TMATHSW (36953)

Timed Math 1.0 provides an excellent way for teachers to assess the mathematical level of their students on an individual basis. It will present a screen of 50 math problems and allow the student to answer them as long as the timer has not run out. The level of problems and the time limit allowed is set by the teacher. If the timer runs out before a student has finished all of the problems, or if the student finishes before the timer runs out, the results of their attempts at the problems will be displayed. The screen cannot be cleared by the student without the password. Reg Fee \$15

TRIX2 (160785)

ArithmeTricks 2.0 is an introduction to rapid math techniques with an emphasis on mental calculations. 17 'Tricks' for addition, subtraction, multiplication and division are provided, with endless examples. Reg Fee \$0

UPDAT113* (63963)

Update (SVS) 1.13 mirrors a workstation hard disk or part of it on a server and restores it at each startup. Each mirror/archive can contain multiple versions of the hard disk. Support is provided for Win95 long filenames even under DOS. Archives containing long filenames can reside on file system that does not support long filenames. Reg Fee \$350

ZIPSCR (37157)

ZipScrub 1.2 deletes obsolete files from PKZIP archive files. It compares the file-names in a ZIP archive to the source directory. If files with the same names no longer exist in the source, they are purged from the archive. Reg Fee \$0

